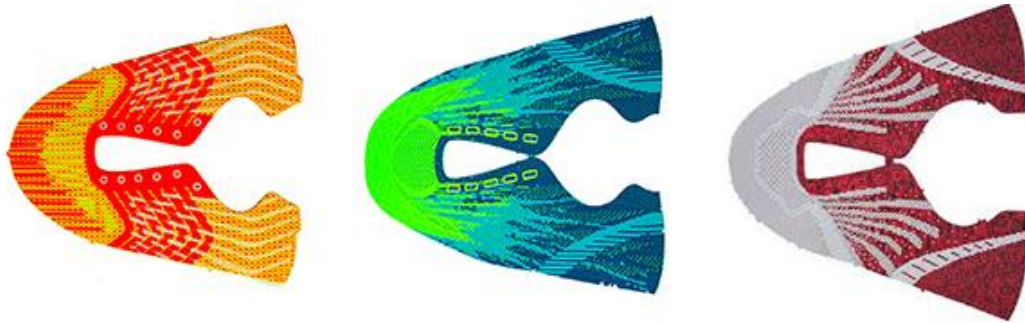
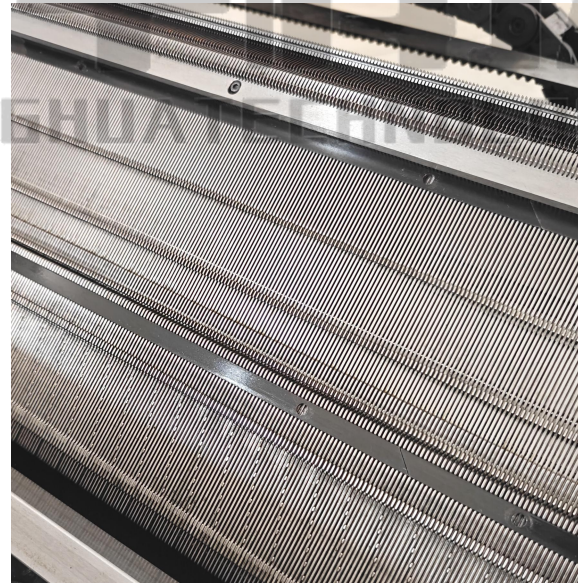
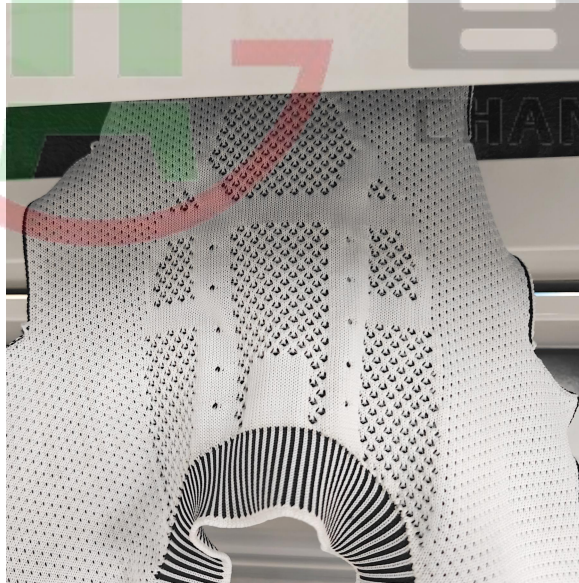


Shoe Upper Knitting Machine

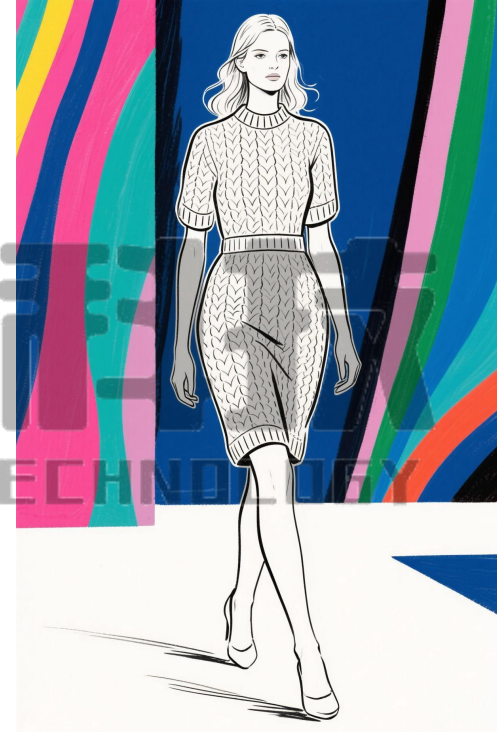
Changshu Changhua Smart
Manufacturing Technology CO,LTD



Machine Details



Product Display





- The Changhua Shoe Upper Knitting Machine is a cutting-edge solution designed for the seamless production of high-performance knitted shoe uppers. Utilizing advanced digital knitting technology, this machine enables precise, single-piece construction of complex 3D shoe upper designs with varying densities and textures—all without seams or waste material.
- Equipped with multi-zone stitch control and automated yarn feeding, it effortlessly handles technical fibers like polyester, nylon, and elastic blends, delivering breathable, lightweight, and durable uppers tailored for athletic, casual, and industrial footwear. The intuitive touchscreen interface allows for quick design uploads and real-time adjustments, supporting rapid prototyping and small-batch customization.
- With high-speed servo motors and energy-efficient operation, the machine maximizes productivity while minimizing costs. Integrated IoT connectivity enables remote monitoring and predictive maintenance, ensuring uninterrupted production. Changhua's innovation empowers footwear brands to meet sustainability goals and market demands with agile, waste-free manufacturing—ushering in the future of smart shoe production.

PRODUCT SPECIFICAYION

Gauge	14G16G18G
Knitting width	36, 52, 72, 80 Inch
Knitting system	Three system
Knitting speed	Controlled by servo-motor with 128 sections optional, max speed reach 1.6m/s
Knitting function	Knit, miss, tuck, transfer, pointel, intarsia, jacquard, apparent or hide shaping and other regular or irregular patterns.
Racking	Controlled by servo-motor racking within 2 inches and with fine adjusting function.
Stitch density	Controlled by stepping motor, 128 section stitch select-able adjustable scope supported by subdivision technology: 0-650, the stitch of the knitwear can be accurately controlled.
Dynamic stitch	Using high speed stepping motor, multi-stitch function can be achieved in one line.
Needle selection	Advanced encoder reading pin.8-stage selecting needle setup composed of special electromagnet is regarded as efficient full width jacquard needle selector, which can be installed or removed simply from the carriage and maintained easily.
Sinker system	Using the control principle of cross sinker, more lines of local braiding can be carried out, which plays a positive role in the braiding of complex tissues. Independent signal, subsystem control.
Transfer system	Combined design, single or double cam system all can transfer together or separately. Also one can do transfer, another cam system for knitting, which will achieve high production.
Quickly turning	Intelligent switching braiding system improves machine weaving efficiency.
Take-down system	Infrared alarm, computer programs instruction, stepper motor control, 128-stage tension selection with an adjustable range between 0-100.
Color-changing system	2x8 yarn feeders on each side of 4 guide rails, shift able on any needle position.
Yarn feeder device	The roller feeding device can precisely control the tension of the yarn and ensure the consistency of the whole fabric quality.
Protection system	The machine will automatically alarm if yarn-breaking, knots, floating yarn, rewind, end of knitting, fail of racking, needle breakage, error programming occur, also set up the safety auto-lock protect device.
Refueling device	Automatic refueling: Control the refueling time and frequency by setting the time. The oil pump lubricate the jack and long jack needle on the needle bed automatically to reduce the wear of the machine and increase its service life.
Control system	1. LCD industrial display, can display various parameters, which can be adjustable during operation.2.USB memory interface, System memory 2G.3.Free design system is visual and easy to understand and software upgrade free of charge.4.Support multi-language operation as Chinese and English, Spanish, Russian etc.
Network function	Has network interface, enable remote-monitoring via network, and connecting with ERP system.
Power supply	Single-phase 220V/three-phase 380V, adopt advanced CMOS technology, having memorizing function at power shock stop.
Sub roller	Sub roller (Optional)
Presser device	Positioned on front and rear presser (Optional)
Volume and weight	3000*1000*1800mm1150kgs(52inch)
Reducing device	Automatic refueling: Control the refueling time and frequency by setting the time. The oil pump lubricate the jack and long jack needle on the needle bed automatically to reduce the wear of the machine and increase its service life.