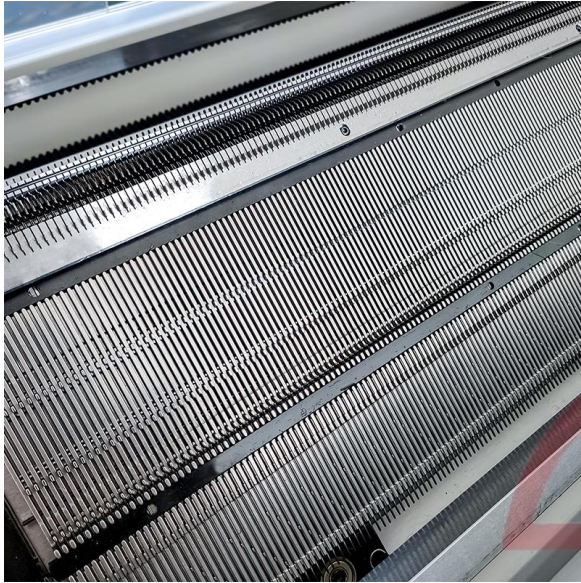


Double System Scarf Knitting Machine

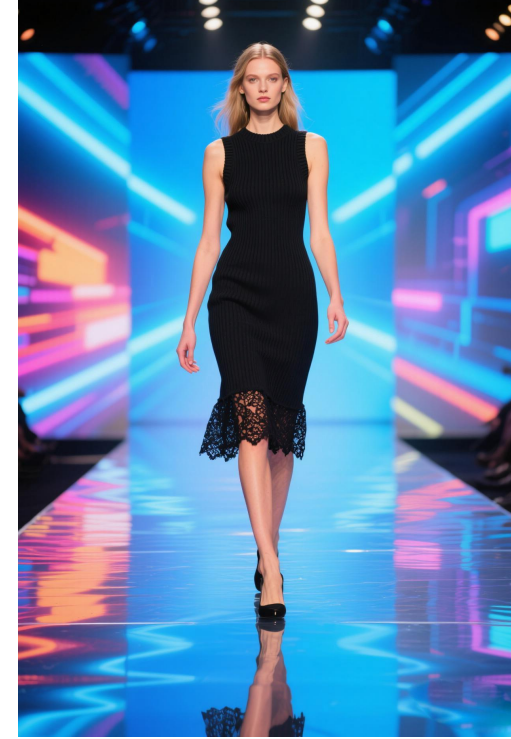
Changshu Changhua Smart
Manufacturing Technology CO,LTD



Machine Details



Product Display





- The Changhua Dual-System Scarf Knitting Machine represents a breakthrough in textile automation, designed specifically for high-efficiency scarf production. Featuring an innovative dual-needle bed system, this advanced machine enables simultaneous knitting of both sides of a scarf, dramatically improving production speed while maintaining perfect consistency in pattern alignment and fabric density.
- Equipped with computerized pattern control and automatic yarn tension adjustment, the machine handles various materials from fine wool to chunky acrylic blends with precision. Its intelligent stitch formation technology allows for complex designs including cables, lace patterns, and colorwork without manual intervention. The user-friendly touchscreen interface simplifies operation while providing real-time monitoring of production parameters.
- With energy-saving motors and reduced yarn waste features, this machine offers an eco-friendly production solution. The optional IoT connectivity enables remote diagnostics and production data analysis for smart factory integration. Changhua's dual-system technology redefines scarf manufacturing by combining unmatched productivity with design flexibility - perfect for both mass production and customized small batches in today's dynamic fashion market.

PRODUCT SPECIFICAYION

Gauge	1.5G2.5G3G3.5G5G5/7G7G8G9G10G12G14G16G18G
Knitting width	52, 60, 66, 72, 80, 100, 120 Inch
Knitting system	Double system, Double carriage double system (optional)
Knitting speed	Controlled by servo-motor with 32 sections optional, max speed reach 1.6m/s
Knitting function	Knit, miss, tuck, transfer, pointel, intarsia, jacquard, apparent or hide shaping and other regular or irregular patterns.
Racking	Controlled by servo-motor racking within 2 inches and with fine adjusting function.
Stitch density	Controlled by stepping motor, 32 section stitch select-able adjustable scope supported by subdivision technology: 0-650, the stitch of the knitwear can be accurately controlled.
Dynamic stitch	Using high speed stepping motor, multi-stitch function can be achieved in one line.
Needle selection	Advanced encoder reading pin.8-stage selecting needle setup composed of special electromagnet is regarded as efficient full width jacquard needle selector, which can be installed or removed simply from the carriage and maintained easily.
Sinker system	controlled by stepping motor, adjustable to different knitwear, up to be various results of shaping and patterns.
Transfer system	Combined design, single or double cam system all can transfer together or separately. Also one can do transfer, another cam system for knitting, which will achieve high production.
Quickly turning	Intelligent switching braiding system improves machine weaving efficiency.
Take-down system	Infrared alarm, computer programs instruction, stepper motor control, 32-stage tension selection with an adjustable range between 0-100.
Color-changing system	2x8 yarn feeders on each side of 4 guide rails, shift able on any needle position.
Yarn feeder device	Accurately control the tension of the yarn and ensure the consistency of the whole woven piece quality.
Protection system	The machine will automatically alarm if yarn-breaking, knots, floating yarn, rewind, end of knitting, fail of racking, needle breakage, error programming occur, also set up the safety auto-lock protect device.
Refueling device	Automatic refueling: Control the refueling time and frequency by setting the time. The oil pump lubricate the jack and long jack needle on the needle bed automatically to reduce the wear of the machine and increase its service life.
Control system	1. LCD industrial display, can display various parameters, which can be adjustable during operation.2.USB memory interface, System memory 2G.3.Free design system is visual and easy to understand and software upgrade free of charge.4.Support multi-language operation as Chinese and English, Spanish, Russian etc.
Network function	Has network interface, enable remote-monitoring via network, and connecting with ERP system.
Power supply	Single-phase 220V/three-phase 380V, adopt advanced CMOS technology, having memorizing function at power shock stop.